

**MAK Antibody (C-term)**  
**Affinity Purified Rabbit Polyclonal Antibody (Pab)**  
**Catalog # AP20087b**

**Specification**

---

**MAK Antibody (C-term) - Product Information**

Application	WB,E
Primary Accession	<a href="#">P20794</a>
Other Accession	<a href="#">P20793</a> , <a href="#">Q04859</a> , <a href="#">NP_005897.1</a>
Reactivity	Human
Predicted	Mouse, Rat
Host	Rabbit
Clonality	Polyclonal
Isotype	Rabbit IgG
Calculated MW	70581
Antigen Region	595-623

**MAK Antibody (C-term) - Additional Information**

**Gene ID** 4117

**Other Names**

Serine/threonine-protein kinase MAK, Male germ cell-associated kinase, MAK

**Target/Specificity**

This MAK antibody is generated from rabbits immunized with a KLH conjugated synthetic peptide between 595-623 amino acids from the C-terminal region of human MAK.

**Dilution**

WB~~1:1000

E~~Use at an assay dependent concentration.

**Format**

Purified polyclonal antibody supplied in PBS with 0.09% (W/V) sodium azide. This antibody is purified through a protein A column, followed by peptide affinity purification.

**Storage**

Maintain refrigerated at 2-8°C for up to 2 weeks. For long term storage store at -20°C in small aliquots to prevent freeze-thaw cycles.

**Precautions**

MAK Antibody (C-term) is for research use only and not for use in diagnostic or therapeutic procedures.

**MAK Antibody (C-term) - Protein Information**

**Name** MAK

**Function** Essential for the regulation of ciliary length and required for the long-term survival of photoreceptors (By similarity). Phosphorylates FZR1 in a cell cycle-dependent manner. Plays a role in the transcriptional coactivation of AR. Could play an important function in spermatogenesis. May play a role in chromosomal stability in prostate cancer cells.

#### **Cellular Location**

Nucleus. Cytoplasm, cytoskeleton, microtubule organizing center, centrosome. Cytoplasm, cytoskeleton, spindle Midbody. Cell projection, cilium, photoreceptor outer segment. Photoreceptor inner segment. Note=Localized in both the connecting cilia and the outer segment axonemes (By similarity) Localized uniformly in nuclei during interphase, to the mitotic spindle and centrosomes during metaphase and anaphase, and also to midbody at anaphase until telophase.

#### **Tissue Location**

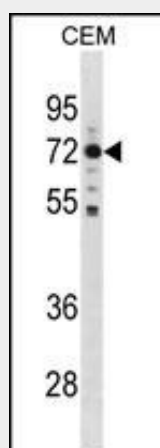
Expressed in prostate cancer cell lines at generally higher levels than in normal prostate epithelial cell lines Isoform 1 is expressed in kidney, testis, lung, trachea, and retina Isoform 2 is retina-specific where it is expressed in rod and cone photoreceptors.

### **MAK Antibody (C-term) - Protocols**

Provided below are standard protocols that you may find useful for product applications.

- [Western Blot](#)
- [Blocking Peptides](#)
- [Dot Blot](#)
- [Immunohistochemistry](#)
- [Immunofluorescence](#)
- [Immunoprecipitation](#)
- [Flow Cytometry](#)
- [Cell Culture](#)

### **MAK Antibody (C-term) - Images**



MAK Antibody (C-term) (Cat. #AP20087b) western blot analysis in CEM cell line lysates (35ug/lane). This demonstrates the MAK antibody detected the MAK protein (arrow).

### **MAK Antibody (C-term) - Background**

The product of this gene is a serine/threonine protein kinase related to kinases involved in cell cycle regulation. It is expressed almost exclusively in the testis, primarily in germ

cells. Studies of the mouse and rat homologs have localized the kinase to the chromosomes during meiosis in spermatogenesis, specifically to the synaptonemal complex that exists while homologous chromosomes are paired. There is, however, a study of the mouse homolog that has identified high levels of expression in developing sensory epithelia so its function may be more generalized.

#### **MAK Antibody (C-term) - References**

Fu, Z., et al. Mol. Cell. Biol. 26(22):8639-8654(2006)  
Ma, A.H., et al. Cancer Res. 66(17):8439-8447(2006)  
Mungall, A.J., et al. Nature 425(6960):805-811(2003)  
Xia, L., et al. J. Biol. Chem. 277(38):35422-35433(2002)  
Taketo, M., et al. Genomics 19(2):397-398(1994)